

为您的产品保驾护航

PRODUCT DATASHEET

Gas Discharge Tubes

JTS3216



Description

Gas discharge tubes (GDT) use noble gasses enclosed in ceramic tubes to provide an alternate circuit path for voltage spikes. The ceramic envelope and with nickel connectors allow for high loads and Ruilon offers products that function at 20KA, 40KA, 50KA, 60KA, 100KA & 150KA. The breakdown voltages of the devices have a wide range (up to 20% tolerance). Major applications are high frequency telecommunication lines, stations, security systems, HID and high quality Surge Protection Devices (SPD).

Features

- RoHS & HF compliant
- Size: 3.2mm*1.6mm
- DC Spark-over voltage: 75~600V
- Stable breakdown voltage.
- High insulation resistance.
- High holdover voltage.
- Large absorbing transient current capability.
- Low Capacitance
- Micro-Gap Design

Applications

- Communication equipment
- CATV equipment
- Test equipment
- Data lines
- Power supplies
- Telecom SLIC protection
- Telecommunications

Product Identification

JT S 3216-075 □

D = Surge Rating

Blank=0.5kA, B=2kA, D=3kA,
G=5kA, H=10kA, K=20kA,

M=40kA, P=60kA **075 = DC**

Spark-over Voltage 75V

3216 = Device Dimensions:

Length/width (Unit: 1/100 inch) Size
3216 mm / 1206 inch

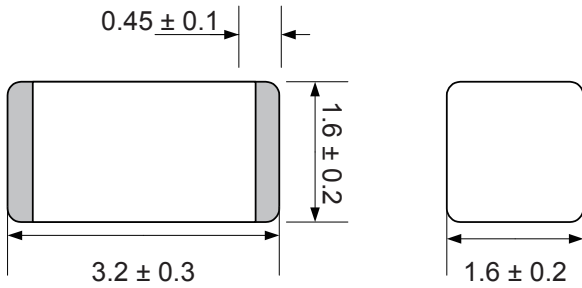
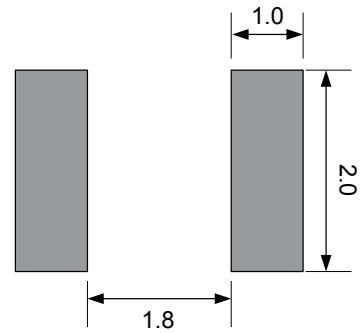
S = Lead Configuration

A=Axial Leads
N=No Leads
S=Surface Mount
T=T-shaped Leads

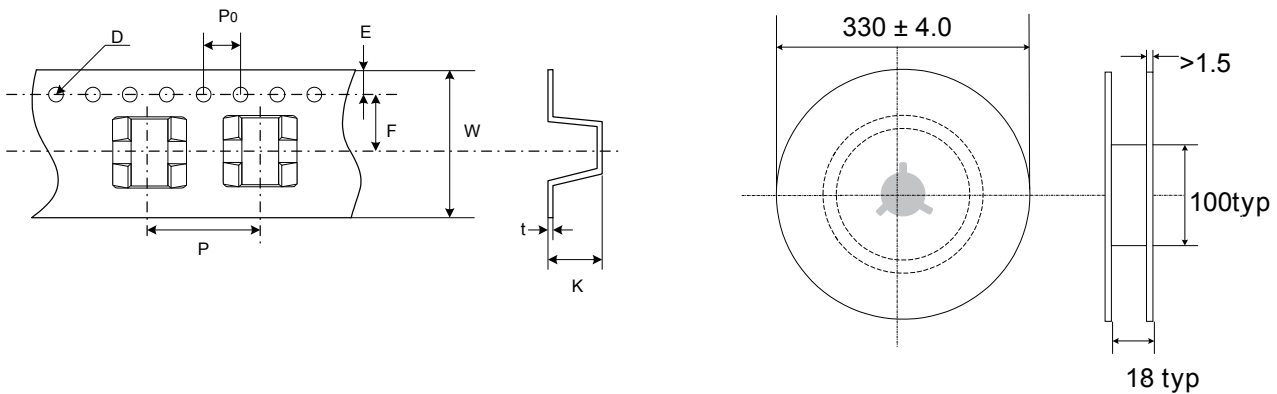
JT = JDT Gas Discharge Tube

Performance Specification

Part Number	DC Spark-over Voltage	Maximum Impulse Breakdown Voltage	Max. Impulse Discharge Current (8/20 μ s)	Impulse Life	Normal Alternating Discharge Current	DC Holdover Voltage
	100V/S	8/20 μ s	50Hz, 1Sec	8/20 μ s,50A	@DC 100V	1MHz
	(V)	(A)	(A)	Times	(G Ω)	(pF)
JTS3216-075	75 (55~95)	500A (Positive/Negative5 Times)	0.5A 10 Times	300	Min. 100	1
JTS3216-090	90 (63~117)	500A (Positive/Negative5 Times)	0.5A 10 Times	300	Min. 100	1
JTS3216-120	120 (84~156)	500A (Positive/Negative5 Times)	0.5A 10 Times	300	Min. 100	1
JTS3216-150	150 (105~195)	500A (Positive/Negative5 Times)	0.5A 10 Times	300	Min. 100	1
JTS3216-200	200 (140~260)	500A (Positive/Negative5 Times)	0.5A 10 Times	300	Min. 100	1
JTS3216-230	230 (161~299)	500A (Positive/Negative5 Times)	0.5A 10 Times	300	Min. 100	1
JTS3216-300	300 (210~390)	500A (Positive/Negative5 Times)	0.5A 10 Times	300	Min. 100	1
JTS3216-350	350 (245~455)	500A (Positive/Negative5 Times)	0.5A 10 Times	300	Min. 100	1
JTS3216-400	400 (280~520)	500A (Positive/Negative5 Times)	0.5A 10 Times	300	Min. 100	1
JTS3216-420	420 (294~546)	500A (Positive/Negative5 Times)	0.5A 10 Times	300	Min. 100	1
JTS3216-470	470 (329~611)	500A (Positive/Negative5 Times)	0.5A 10 Times	300	Min. 100	1
JTS3216-500	500 (350~650)	500A (Positive/Negative5 Times)	0.5A 10 Times	300	Min. 100	1
JTS3216-600	600 (420~780)	500A (Positive/Negative5 Times)	0.5A 10 Times	300	Min. 100	1

Product size (Unit:mm)
Dimension

Recommended Pad Size

Packaging Taping

Unit:mm


Quantity: 3000 pcs per reel (13")

Item	P	PO	W	F	E	D	K	t
Spec.	8.0	4.0	12.0	5.45	1.75	Φ1.55	2.0	0.3
Tolerance	±0.1	±0.1	±0.3	±0.1	±0.1	±0.05	±0.1	±0.05